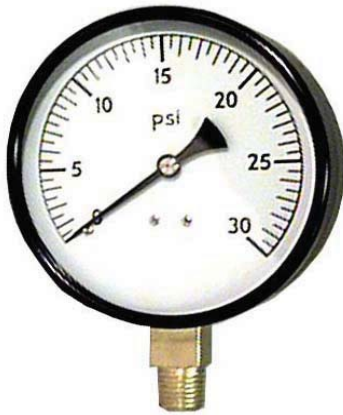


GAUGES & INSTRUMENTATION

W-R STANDARD PRESSURE GAUGES



- 1/4" NPT brass lower connection
- Black steel case
- For water, oil, & gas
- Not for use on oxygen

W-R#	Size	PSI	Increments
1712002	2"	15 psi	1/2 lb.
1712004	2"	30 psi	1/2 lb.
1712006	2"	60 psi	1 lb.
1712008	2"	100 psi	2 lb.
1712010	2"	160 psi	5 lb.
1712012	2"	200 psi	4 lb.
1712014	2"	300 psi	5 lb.
1712016	2"	400 psi	8 lb.

1712502	2 1/2"	15 psi	1/2 lb.
1712504	2 1/2"	30 psi	1/2 lb.
1712506	2 1/2"	60 psi	1 lb.
1712508	2 1/2"	100 psi	2 lb.
1712510	2 1/2"	160 psi	5 lb.
1712512	2 1/2"	200 psi	4 lb.
1712514	2 1/2"	300 psi	5 lb.
1712516	2 1/2"	400 psi	8 lb.

1712802	3 1/2"	15 psi	1/2 lb.
1712804	3 1/2"	30 psi	1/2 lb.
1712806	3 1/2"	60 psi	1 lb.
1712808	3 1/2"	100 psi	2 lb.
1712810	3 1/2"	160 psi	5 lb.
1712812	3 1/2"	200 psi	4 lb.
1712814	3 1/2"	300 psi	5 lb.
1712816	3 1/2"	400 psi	8 lb.
1712818	3 1/2"	600 psi	10 lb.

1713002	4 1/2"	15 psi	1/2 lb.
1713004	4 1/2"	30 psi	1/2 lb.
1713006	4 1/2"	60 psi	1 lb.
1713008	4 1/2"	100 psi	2 lb.
1713010	4 1/2"	160 psi	5 lb.
1713012	4 1/2"	200 psi	4 lb.
1713014	4 1/2"	300 psi	5 lb.
1713016	4 1/2"	400 psi	8 lb.
1713018	4 1/2"	600 psi	10 lb.



W-R STANDARD PRESSURE GAUGES WITH 1/8" LOWER NPT

W-R#	Size	PSI	Increments
1717002	2 1/2"	30 psi	1/2 lb.
1717004	2 1/2"	100 psi	2 lb.

GAUGES & INSTRUMENTATION



VACUUM GAUGE

W-R#	Description	PSI
------	-------------	-----

1720002	2" Vacuum	-30 psi
1720004	2½" Vacuum	-30 psi
1720006	3½" Vacuum	-30 psi

- ¼" NPT Lower Connection



COMPOUND GAUGE

W-R#	Description	PSI
------	-------------	-----

1719002	2" Compound	30-0-30
1719004	2½" Compound	30-0-30
1719006	3½" Compound	30-0-30

- ¼" NPT Bottom Outlet



**1/4" NPT
BACK OUTLET
PRESSURE GAUGE**

W-R#	Description	PSI
------	-------------	-----

1714002	2½" C.B.O.	30 psi
1714004	2½" C.B.O.	100 psi

1714202	3½" C.B.O.	30 psi
---------	------------	--------

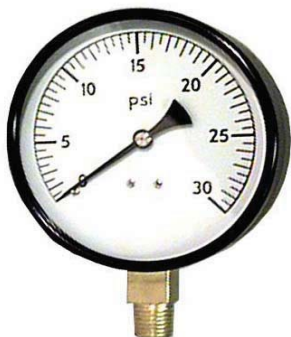


**WATER TEST GAUGE
WITH 3/4" FHT**

W-R#	Description	PSI
------	-------------	-----

1721002	2½"	200 psi
---------	-----	---------

- ¾" Female Garden Hose thread
- 2 psi increments



**2 1/2" SILICON
LIQUID-FILLED GAUGE**

Stainless Steel Case
1/4" NPT Lower Connection

W-R#	Description	PSI
------	-------------	-----

1712600	2 1/2"	15 psi
1712601	2 1/2"	30 psi
1712602	2 1/2"	60 psi
1712604	2 1/2"	100 psi
1712606	2 1/2"	200 psi
1712608	2 1/2"	300 psi

1719000	30-0-30 Compound	
1720000	- 30 psi Vacuum	

GAUGES & INSTRUMENTATION



**5 PSI & 10 PSI
DIAPHRAGM GAUGE
FOR GAS TEST**



W-R#	Description	PSI
1715500	2 1/2" Diaphragm	5 psi
1715502	2 1/2" Diaphragm	10 psi

- 1/4" NPT
- 1/10 Increments
- Accuracy: 1.5% of full scale range

Please note: This gauge is extremely sensitive. Overpressurizing this gauge will cause the measuring element to fail and render the gauge inoperable. Wal-Rich will not accept returns of gauges that are improperly used.



**GAS TEST MANIFOLD
& AIR VALVE**

W-R#	Description	Min	Box
A000334	Manifold	1	-
1838102	1/8" Air Valve	12	12
1838100	Manifold & Valve	1	-



**STANDARD GAS TEST
ASSEMBLY**

W-R#	Description	Increments
1838103	2" 15# gauge	1/2 lb.
1838104	2" 30# gauge	1/2 lb.
1838106	2" 60# gauge	1 lb.
1838108	2" 100# gauge	2 lb.

- 3/4" FIP brass-plated manifold
- Individually bagged
- 1/8" air valve included



**5 PSI & 10 PSI
LOW-PRESSURE GAS
TEST ASSEMBLY**

W-R#	Description	Min	Box
1838110	5 psi Low Pressure Test Kit		
1838112	10 psi Low Pressure Test Kit		

- Furnished as shown with hexagonal test block, 1/8" tank valve, & 1/8" Male X Female Air Cock.
- Uses 2 1/2" 1/4" NPT Diaphragm Gauge
- **Increments: 1/10 psi**
- Accuracy: 1.5% of full-scale range

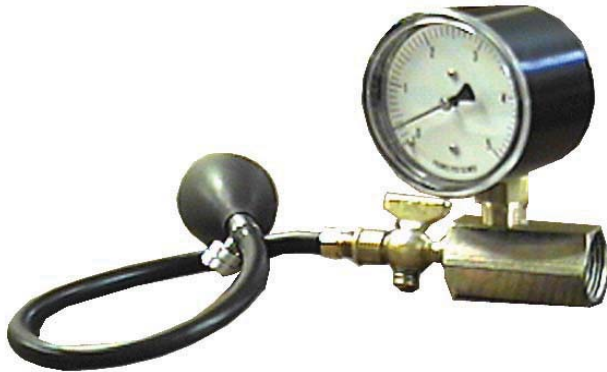
Please note: This gauge is extremely sensitive. Overpressurizing this gauge will cause the measuring element to fail and render the gauge inoperable. Wal-Rich will not accept returns of gauges that are improperly used.

The key to the **W-R Low Pressure Gas Test Kit** is the diaphragm actuated gauge. Standard Pressure gauges are not capable of measuring minute variations because they use a bourdon tube. This type of measuring element, which is effective for higher pressures, will not detect the minute variations in pressure when a leak exists.

Be advised **AIR COMPRESSORS** should not be used to get a reading, and that most **BICYCLE** and **HAND PUMPS** can deliver upwards of 60 psi. per thrust.

GAUGES & INSTRUMENTATION

**5 PSI & 10 PSI
GAS TEST KIT WITH RUBBER BULB**



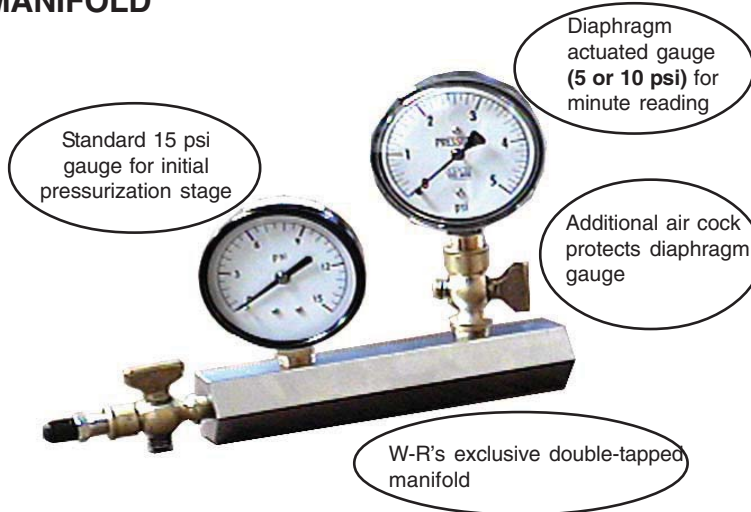
W-R#	Description
GT-5	5 PSI Kit
GT-10	10 PSI Kit
1838200	Bulb & Tubing Only

- Furnished as shown with hexagonal test block, 1/8" tank valve, & 1/8" Male X Female Air Cock.

- Increments: 1/10 psi
- Accuracy: 1.5% of full-scale range

Please note: This gauge is extremely sensitive. Overpressurizing this gauge will cause the measuring element to fail and render the gauge inoperable. Wal-Rich will not accept returns of gauges that are improperly used.

**5 PSI & 10 PSI
GAS TEST KIT WITH DOUBLE-TAPPED
MANIFOLD**



W-R#	Description
BDGT-5	5 PSI "NYC" Kit
BDGT-10	10 PSI "NYC" Kit

Contains:

- Steel Double-tapped hexagonal test block
- 1/4" Male x Female Air Cock
- 1/8" Male x Female Air Cock
- 2 1/2" 15 psi Standard Pressure Gauge
- **Uses 2 1/2" 1/4" NPT 5# or 10# Diaphragm Gauge**

(Increments: 1/10 psi for minute readings)
- Accuracy: 1.5% of full-scale range

Please note: This gauge is extremely sensitive. Overpressurizing this gauge will cause the measuring element to fail and render the gauge inoperable. Wal-Rich will not accept returns of gauges that are improperly used.



PRESSURE SNUBBERS

W-R#	Description	Box
1726004	Brass Snubber	6

- For regulation of sudden pressure changes

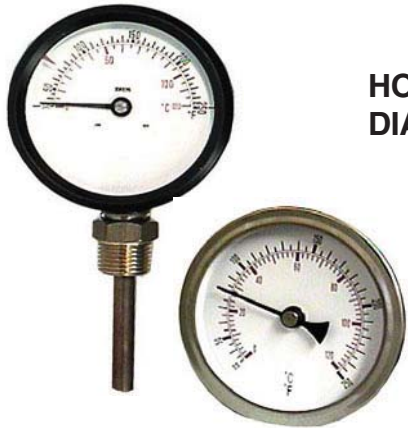


**PIGTAIL STEAM
SYPHONS**

1/4"MNPT x 1/4"MNPT

W-R#	Description	Box
1706002	Straight (180°) - Steel	6
1706006	Straight (180°) - Brass	6
1706004	Angle (90°) - Steel	6
1706008	Angle (90°) - Brass	6

GAUGES & INSTRUMENTATION



HOT WATER DIAL THERMOMETER

W-R# Description

- 1722011** Angle (Back Outlet)
- 1722013** Straight (Bottom Outlet)

SIZE: 3½" Face, ½" NPT
 CASE: Steel
 WINDOW: Glass
 SOCKET: Brass
 RANGE: 30° TO 248°F
 TEMPERATURE ELEMENT: Helical bi-metallic element enclosed in a brass bulb



"SNAP-WELL" THERMOMETERS

W-R# Description

- 1722014** Brass Probe
- 1722015** Aluminum Probe
- 1722016** 3/4" Sweat Well

- 2" Face
- ½" NPT connection
- Graduation from 40° to 240°
- Snaps out of its brass well for easy replacement or calibration.

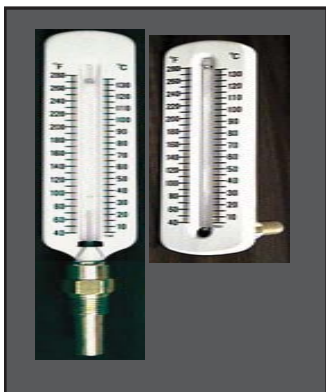


W-R BRASS WELL THERMOMETER

W-R# Description

- 1722000** Straight (Bottom Mount)
- 1722001** Angle (Back Mount)

- 6" Non-corrosive Valox® case
- ½" NPT connection
- Graduation from 40° to 280°



ECONOMY HOT WATER THERMOMETERS

W-R# Description

- 1722002** Steel Well - Straight
- 1722004** Steel Well - Angle
- 1722006** Brass Well - Straight
- 1722008** Brass Well - Brass

- 6" steel case case with white lacquer finish
- ½" NPT connection
- Graduation from 40° to 280°

GAUGES & INSTRUMENTATION



7" ADJUSTABLE ANGLE THERMOMETER

W-R#	Description
1722020	7" Hot Water Thermometer
	- Adjustable radius of 180 Degrees
	- 1/2" Brass Connection
	- 40-240° F



POCKET THERMOMETERS

W-R#	Description
1802214	0 - 220°F
	- Plastic Sheath
	- Pocket Clip



W-R TRIDICATORS

W-R#	Face	Shank	NPT	Outlet
1711016	2 1/2"	(1")	1/4"	Angle
1711018	2 1/2"	(2 1/4")	1/4"	Angle

- 60° - 320°F
- 0 - 75 psi

W-R#	Face	NPT	Outlet
1711015	3 1/4"	1/4"	Straight
1711011	3 1/4"	1/2"	Angle
1711009	3 1/4"	1/2"	Straight

- 70° - 250°F
- 0 - 55 psi



MARSHALLTOWN® TRIDICATOR
SQUARE FACE



W-R#	Face	NPT	Outlet
1711010	3 1/2"	1/2"	Angle
1711012	3 1/2"	1/2"	Straight

- Made in USA
- 60°-260°F
- 0 - 60 psi



THERMOWELLS FOR AQUASTATS

W-R#	Diameter	Length
1751032	1/2"	3"
1751034	3/4"	3"
1751038	3/4"	6"

- Brass immersion well
- Fits Honeywell, White Rodgers