



Job Name: _____

Job Location: _____

Contractor: _____

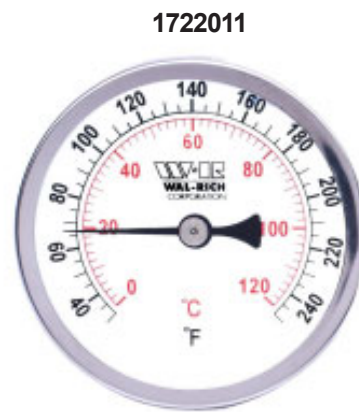
Engineer: _____

Approval: _____

Wal-Rich Hot Water Dial Thermometer

Design Features:

- 1/2" NPT Connection
- 3-1/2" Glass Face
- 3-1/4" Brass Well
- Brass Socket
- Helical Bimetallic Temperature Element
- Individually Boxed
- Imported



W-R#	Description	Range	Increments	Weight
1722011	Angle (Back Outlet)	32-250° F 0-120° C	2° F 2° C	.390 lbs.
1722013	Straight (Bottom Outlet)	32-250° F 0-120° C	2° F 2° C	.690 lbs.