

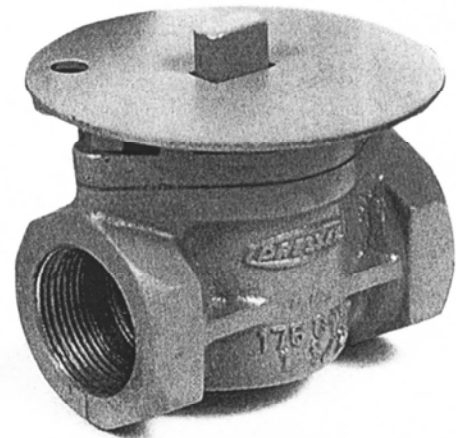
Style 350 Ultraseal[®] Gas Valve FIPS End Configuration



Style 350 Ultraseal FIPS end valves are ideal for use in threaded meter sets, regulator stations or for pipeline isolation applications

A permanently lubricated valve...providing bidirectional, bubble-tight shut-off and zero leakage to the atmosphere.

- **Permanently lubricated:** Saves the time and hassle of re-lubrication. Designed to prevent freeze-up or blocking of meters with lubricant.
- **Bi-directional:** No worries about whether the valve was installed in the proper direction.
- **Temperature ratings:** -30° F. to 150° F.
- **Flow capacity:** Flow capacity requirements meet applicable sections of ANSI B16.33 or B16.38.
- **100% Tested:** Each valve is extensively tested to ANSI B16.33 requirements prior to shipping.
- **Torque values:** Extremely low operating torque even at subzero temperature.
- **Locking plate:** Standard locking plate is available for lock-on/lock-off applications.
- **Coating:** Epoxy-coated for excellent corrosion protection.
- **Sizes and operating pressure:** Available in 1-1/4", 1-1/2" and 2" valve sizes with operating pressures from inches of water column to 175 psig.
- **Specially designed** for high performance rotary meters and other precision measurement and flow regulation equipment utilized in the gas industry.
- **2" square operating nut is optional.**



Style 350 Ultraseal FIPS Valve Specifications

Size	Length A	Height B	Center to top C	D	E
1-1/4"	4-5/8"	4-1/2"	3-1/4"	7/16"	7/8"
1-1/2"	4-5/8"	4-1/2"	3-1/4"	7/16"	7/8"
2"	6"	5-5/8"	3-15/16"	5/8"	1-1/4"

NOTE: Style 350 "ULTRASEAL" valves are available in FIPS, weld x weld, weld x flanged and flanged x flanged configurations. See pages 8 and 9.

Materials of Construction

Body & Top Plate: Ductile Iron, ASTM A 536 GR 65-45-12

Plug: Ductile Iron, ASTM A 536 GR 65-45-12

"O" Ring Seals: SBR - Especially compounded for long life in natural gas service.

Metallic Atmospheric Seal: 18-8 Stainless Steel

Springs: Stainless Spring Steel

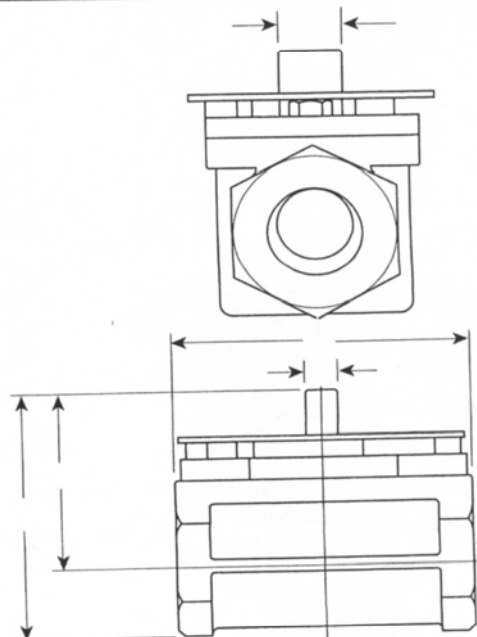
Cap Screws: Steel, ASTM A193 Grade B5

Torque Ring: Polyurethane

Port Seals: SBR Rubber Molded over High Tensile Strength Steel

Weather Seal: Chloroprene Rubber

Lock Plate: Carbon Steel

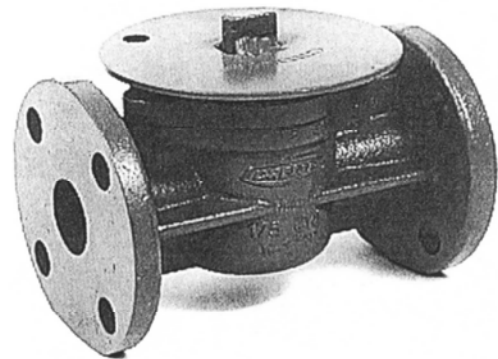




Style 350 Ultraseal[®] Gas Valve Flange End Configuration

Style 350 Ultraseal flanged meter valves and ROOTS meters are the perfect combination for use on pre-assembled meter sets

- **Permanently lubricated:** Saves the time and hassle of re-lubrication. Designed to prevent freeze-up or blocking of meters with lubricant.
- **Bi-directional:** No worries about whether the valve was installed in the proper direction.
- **Bubble-tight seal:** After qualification testing to over 10,000 cycles, the valve sealed bubble-tight at -30°F under both low and high pressure.
- **Temperature ratings:** -30° F. to 150° F.
- **High flow capacity:** Open position provides optimum flow capacity. Meets applicable sections of ANSI B16.33 or B16.38.
- **100% Tested:** Each valve is extensively tested to ANSI B16.33 or B16.38 requirements prior to shipping.
- **Torque values:** Extremely low operating torque even at subzero temperature. Meets ANSI B16.33.
- **Ribbed design:** Provides excellent valve performance, even with piping loads on the valve.
- **Locking plate:** Standard locking plate is available for lock-on/lock-off applications.
- **Body and Plug construction:** Valves are ruggedly constructed of ductile iron with top entry to simplify future repair, if required.
- **Coating:** Epoxy-coated for excellent corrosion protection.
- **Sizes and operating pressure:** Available in 1-1/4", 2", 3" and 4" valve sizes with operating pressures from inches of water column to 175 psig.
- **Specially designed** for high performance rotary meters and other precision measurement and flow regulation equipment utilized in the natural gas industry.
- **2" Square operating nut is optional**



Style 350 Ultraseal Flanged Valve Specifications

Size	Length A	Height B	Center to top C	D	E
1-1/4"	6-1/2"	5-1/8"	3-1/16"	7/16"	4-5/8"
1-1/2"	6-1/2"	5-1/8"	3-1/16"	7/16"	5"
2"	8"	6-9/16"	3-11/16"	5/8"	6"
3"	8"	8-15/16"	5-3/8"	3/4"	7-1/2"
4"	9"	10-1/2"	6"	1"	9"
Size	F	G	H	I	Bolts
1-1/4"	1/2"	3-1/2"	7/8"	5/8"	4
1-1/2"	9/16"	3-7/8"	7/8"	5/8"	4
2"	5/8"	4-3/4"	1-1/4"	3/4"	4
3"	3/4"	6"	1-1/2"	3/4"	4
4"	15/16"	7-1/2"	2"	3/4"	8

Materials of Construction

Body & Top Plate: Ductile Iron, ASTM A 536 GR 65-45-12

Plug: Ductile Iron, ASTM A 536 GR 65-45-12

"O" Ring Seals: SBR - Especially compounded for long life in natural gas service.

Metallic Atmospheric Seal: 18-8 Stainless Steel

Springs: Stainless Spring Steel

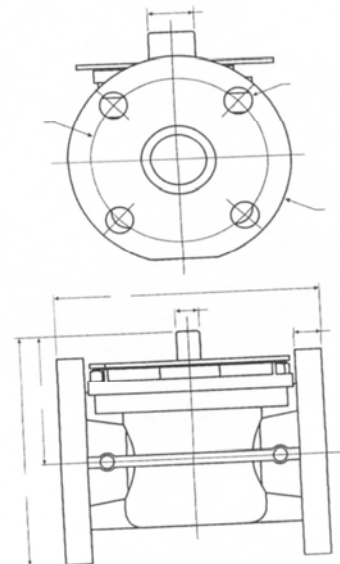
Cap Screws: Steel, ASTM A193 Grade B5

Torque Ring: Polyurethane

Port Seals: SBR Rubber Molded over High Tensile Strength Steel

Weather Seal: Chloroprene Rubber

Lock Plate: Carbon Steel



Style 350 Ultraseal[®] Gas Valve Weld End Configuration



Style 350 Ultraseal Weld End valves are ideal for use in welded meter sets, regulator stations or for pipeline isolation applications

- **Permanently lubricated:** Saves the time and hassle of re-lubrication. Designed to prevent freeze-up or blocking of meters with lubricant.
- **Bi-directional:** No worries about whether the valve was installed in the proper direction.
- **Each valve** is designed, constructed and tested to API 6D requirements.
- **Temperature ratings:** -20° F. to 150° F.
- **Flow capacity:** Flow capacity requirements meet applicable sections of ANSI B16.33 or B16.38.
- **Torque values:** Extremely low operating torque even at subzero temperature.
- **Ribbed design:** Provides excellent valve performance, even with piping loads on the valve.
- **Locking plate:** Standard locking plate is available for lock-on/lock-off applications.
- **Coating:** Epoxy-coated for excellent corrosion protection.
- **Sizes and operating pressure:** Available in 2", 3" and 4" valve sizes. 150 ANSI Class for service pressures from inches of water column to 275 psig.
- **Specially designed** for high performance rotary meters and other precision measurement and flow regulation equipment and below ground applications.
- **2" Square operating nut is optional**



Style 350 Ultraseal Weld Valve Specifications

Size	Length A	Height B	Center to top C	D	E
2"	8-1/2"	5-9/16"	3-11/16"	5/8"	1-1/4"
3"	11-1/8"	8"	5-3/8"	3/4"	1-1/2"
4"	12"	9-5/8"	6"	1"	2"

Materials of Construction

Body & Top Plate: Steel, ASTM A 216 GR WCB (Weld Ends - ASME B31.8) Pressure Rating to 275 PSIG @ 150°F.

Plug: Ductile Iron, ASTM A 536 GR 65-45-12

"O" Ring Seals: SBR - Especially compounded for long life in natural gas service.

Metallic Atmospheric Seal: 18-8 Stainless Steel

Springs: Stainless Spring Steel

Cap Screws: Steel, ASTM A193 Grade B5

Torque Ring: Polyurethane

Port Seals: SBR Rubber Molded over High Tensile Strength Steel

Weather Seal: Chloroprene Rubber

Lock Plate: Carbon Steel

Name Plate: Stainless Steel - Riveted on body with alloy rivets

