

DRESSER® ROOTS®

Style 351 Pipeline Strainer

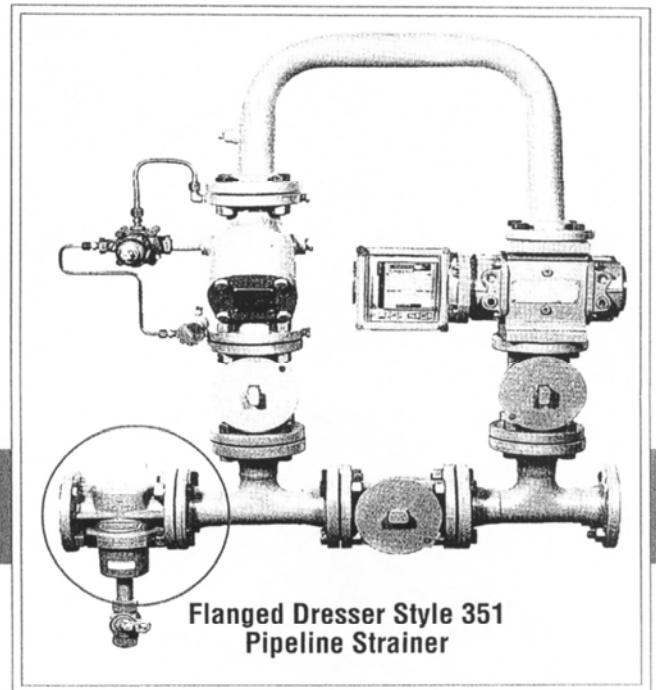
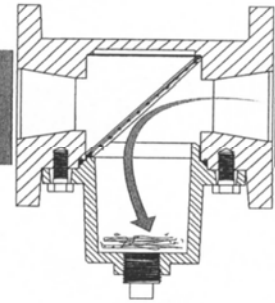
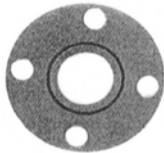
Protects precision equipment from the damaging effects of entrained system debris.

The **DRESSER® ROOTS®** Style 351 Pipeline Strainer is designed to protect precision devices, such as regulation and metering equipment installed downstream of the strainer, from entrained system debris such as plastic shavings, fine particles of dirt, stones, gravel, rust, pipe scale and weld slag.

Check out these Style 351 product features:

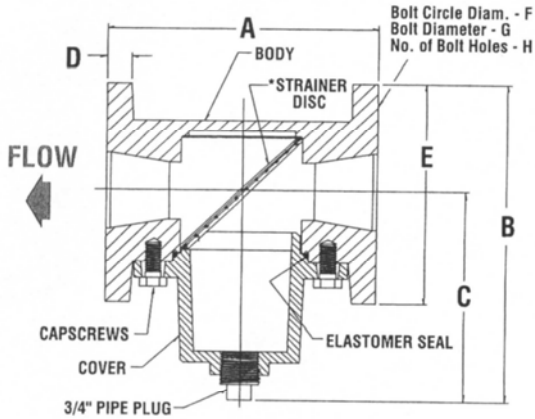
- Low pressure drop is achieved through a large element area and venturi port design.
- The elements are interchangeable and consist of corrosion resistant stainless steel in 20 and 100 mesh configurations and back-up disc for long service life.
- The streamlined flow path is sealed with an elastomeric ring in the body bore which provides positive debris removal and prevents debris from traveling downstream.
- The debris bowl has sufficient volume to provide extended service intervals and is tapped for cleaning or valve attachment for blowdown.
- Available in threaded, flanged or weld end configurations.
- Ideally suited for natural gas and compressed air applications.
- May be installed in vertical or horizontal position.

Dresser recommends the inclusion of gasket strainers in its prefabricated systems to protect pipeline valves and regulation equipment.



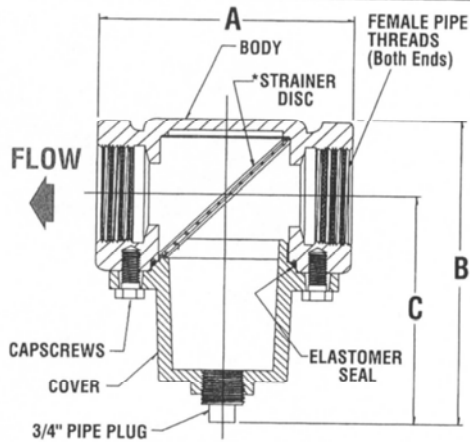
For "one-stop" shopping convenience, Dresser offers complete prefabricated gas measurement and regulation systems custom designed to your specifications.

Style 351 Pipeline Strainer Size Specifications



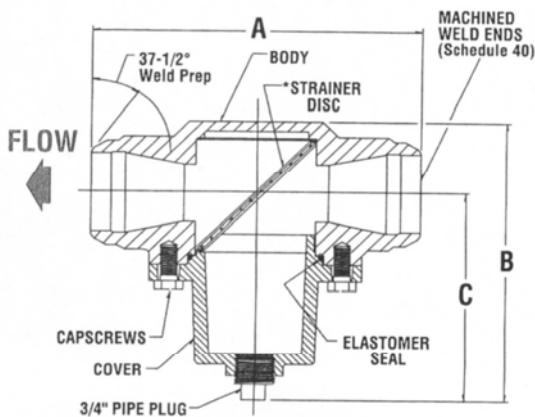
FLANGED END STRAINER

SIZE	A	B	C	D	E	F	G	H
1-1/4"	6-1/2	7-9/16	5-1/4	1/2	4-5/8	3-1/2	1/2	4
1-1/2"	6-1/2	7-3/4	5-1/4	9/16	5	3-7/8	1/2	4
2"	7	8-5/8	5-5/8	5/8	6	4-3/4	5/8	4
3"	8	12-1/8	8-3/8	3/4	7-1/2	6	5/8	4
4"	9	13-3/8	9-7/8	15/16	9	7-1/12	5/8	8



NPT THREADED (Female) END

SIZE	A	B	C
1-1/4"	4-15/16	7-1/2	5-1/4
1-1/2"	4-15/16	11	5-1/4
2"	6-1/8	7-9/16	5-5/8



WELD X WELD END

SIZE	A	B	C
2"	8-1/2	7-1/2	5-5/8
3"	11-1/8	11	8-3/8
4"	12	12-1/2	8-7/8

STYLE 351 MATERIALS OF CONSTRUCTION

BODY: Ductile Iron - ASTM A 536 GR 65-45-12 (Flanged - 150# ANSI B16.42) Max. Pressure Rating -175PSIG @ 150F.
Steel - ASTM A 216 GR WCB (Weld Ends - ANSI B16.31) Pressure Rating to 275PSIG @ 150F.

COVER: Ductile Iron, ASTM A536 GR 65-45-12.

COVER SEAL: SBR - Specially compounded for natural gas service.

ELEMENT: 18-8 Stainless Steel (perforated back-up disc and screen mesh).

CAP SCREWS: Steel (ASTM A 193 Grade B7).

PLUG: Carbon Steel.

Style 351 Pipeline Strainer End/Mesh Configurations

FLANGED - 150 ANSI

SIZE	MESH	PART NUMBER
1-1/4"	20	0351-2125-020
1-1/4"	100	0351-2125-100
1-1/2"	20	0351-2150-020
1-1/2"	100	0351-2150-100
2"	20	0351-2200-020
2"	100	0351-2200-100
3"	20	0351-2300-020
3"	100	0351-2300-100
4"	20	0351-2400-020
4"	100	0351-2400-100

Max. Pressure/Temp: 175 Psig @ 150F
Body Material: Ductile Iron

WELD - Standard 37-1/2° Bevel

SIZE	MESH	PART NUMBER
2"	20	0351-3200-020
2"	100	0351-3200-100
3"	20	0351-3300-020
3"	100	0351-3300-100
4"	20	0351-3400-020
4"	100	0351-3400-100

Max. Pressure/Temp: 275 Psig @ 150F
Body Material: Steel

NPT THREADED

SIZE	MESH	PART NUMBER
1-1/4"	20	0351-1125-020
1-1/4"	100	0351-1125-100
1-1/2"	20	0351-1150-020
1-1/2"	100	0351-1150-100
2"	20	0351-1200-020
2"	100	0351-1200-100

Max. Pressure/Temp: 175 Psig @ 150F
Body Material: Ductile Iron

WARNING

**NEVER INSTALL ANY DRESSER®
PRODUCT BEFORE READING THE
INSTALLATION INSTRUCTIONS
AND WARNINGS!**



Dresser, Inc.
41 Fisher Avenue
Bradford, PA 16701
Ph: 800-458-2398
Fax: 800-362-9344
Email: dmdsales@dresser.com

www.dressercouplings.com

FORM PS-297
Rev.7-06 S1.5M